



Research Unit Vocational Rehabilitation and Inclusion

Our Topics

As a result of demographic developments and the later onset of retirement, the average age of employees in Germany is increasing. At the same time, the risk of health-related limitations rises with increasing age. In Germany, 7.5 million people are officially recognised as severely disabled - 3.3 million of whom are of working age. Solutions that break down barriers and counterbalance restrictions are necessary if companies want to keep employing their proven specialists or if they want to hire new employees. Disabled people can alleviate the shortage of skilled workers - especially considering that many of the severely disabled unemployed are highly qualified.

How can work be organised in such a way as to retain and optimally utilise the potential of employees with health problems and disabilities? Which assistive aids and support services are available for the prevention and compensation of disabilities? What are the processes and the legal frameworks?

The research unit "Vocational Rehabilitation and Inclusion" develops, maintains and expands an online information system that supports the vocational inclusion of people with disabilities.

The website www.rehadat.de contains more than 100,000 items of information. The project is sponsored by the Federal Ministry of Labour and Social Affairs.

Furthermore the research unit develops the IW-Elan software that calculates the compensatory levy for German employers and enables the compilation of an official report.

Our Findings

Assistive Products

The REHADAT-Assistive Products portal provides information on assistive products and

their provision for people with disabilities or health restrictions.

www.rehadat-hilfsmittel.de

Working life and disability

REHADAT-talentplus is a special guide to vocational integration for employers, employees and integration experts.

www.talentplus.de

Education and Profession

REHADAT-Education offers extensive information on the topic of vocational training for young people with disabilities.

www.rehadat-bildung.de

Work design for people with disabilities

REHADAT-Good Practice describes more than 900 case studies showing how work-places can be successfully adapted.

www.rehadat-gutepraxis.de

Judgements and law

REHADAT-Law provides judgements and laws on the subject of vocational inclusion.

www.rehadat-recht.de

Addresses and Advice

REHADAT-Addresses offers more than 24,000 addresses covering all issues of disability.

www.rehadat-adressen.de

Sheltered workshops

REHADAT provides information on the products and services available in sheltered workshops in Germany.

www.rehadat-wfbm.de

Providers of Seminars

REHADAT lists providers of seminars for experts in rehabilitation.

www.rehadat-seminaranbieter.de

Research

REHADAT-Research provides information on research and pilot schemes on vocational participation and inclusion.

www.rehadat-forschung.de

Statistics

REHADAT-Statistics collects information on statistics and empirical studies.

www.rehadat-statistik.de

Literature

More than 33,000 references to books, journal articles, online publications and audiovisual material can be found at RE-HADAT-Literature.

www.rehadat-literatur.de

ICF-Guide

Find information from the REHADAT fields – assistive devices, literature and good practice – with the ICF-Classification.

www.rehadat-icf.de

REHADAT international

REHADAT is a member of the EASTIN association - the European Assistive Technology Information network. The EASTIN internet platform offers a complete European overview of assistive products and related information and was co-funded by the European Commission.

www.eastin.eu

Technology for Independence and Care, Amsterdam, S. 163–169

In German:

Flüter-Hoffmann, Christiane / Stettes, Oliver / Traub, Patricia, 2017, Motiviert und produktiv trotz schwerer Krankheit – REHADAT-Studie „Mit Multipler Sklerose im Job“, IW-Report Nr. 25

Saidie, Jasmin, 2017, In Schwermut steckt Mut! Wie sich die berufliche Teilhabe von Menschen mit Depressionen gestalten lässt, REHADAT-Wissensreihe, Ausgabe 06

Lange, Maisun / Menne, Rieke, 2016, Ich bin doch nicht aus Zucker! Wie sich die berufliche Teilhabe von Menschen mit Diabetes mellitus gestalten lässt, REHADAT-Wissensreihe, Ausgabe 05

Flüter-Hoffmann, Christiane / Kurtenacker, Andrea, 2015, Personalkompass Inklusion – Ein Leitfaden zur Beschäftigung von Menschen mit Behinderung

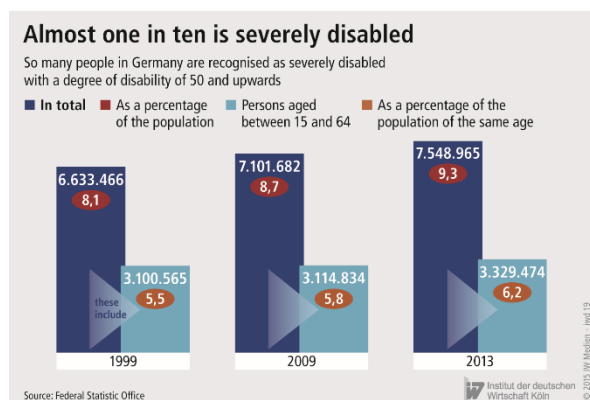
Decker, Mareike, 2015, Nur den Tag absitzen? Nichts für mich! Wie sich die berufliche Teilhabe von Rollstuhlnutzenden gestalten lässt, REHADAT-Wissensreihe, Ausgabe 04

Traub, Patricia, 2015, Und manchmal kribbeln meine Beine - Wie sich die berufliche Teilhabe von Menschen mit Multipler Sklerose gestalten lässt, REHADAT-Wissensreihe, Ausgabe 02

Contact

Head of Research Unit

Petra Winkelmann, + 49 221 4981-820,
winkelmann@iwkoeln.de



Selected publications

In English:

Winkelmann, Petra, 2011, REHADAT: The German information system on assistive devices, in: Gelderblom, Gert Jan et al. (Hrsg.), Everyday